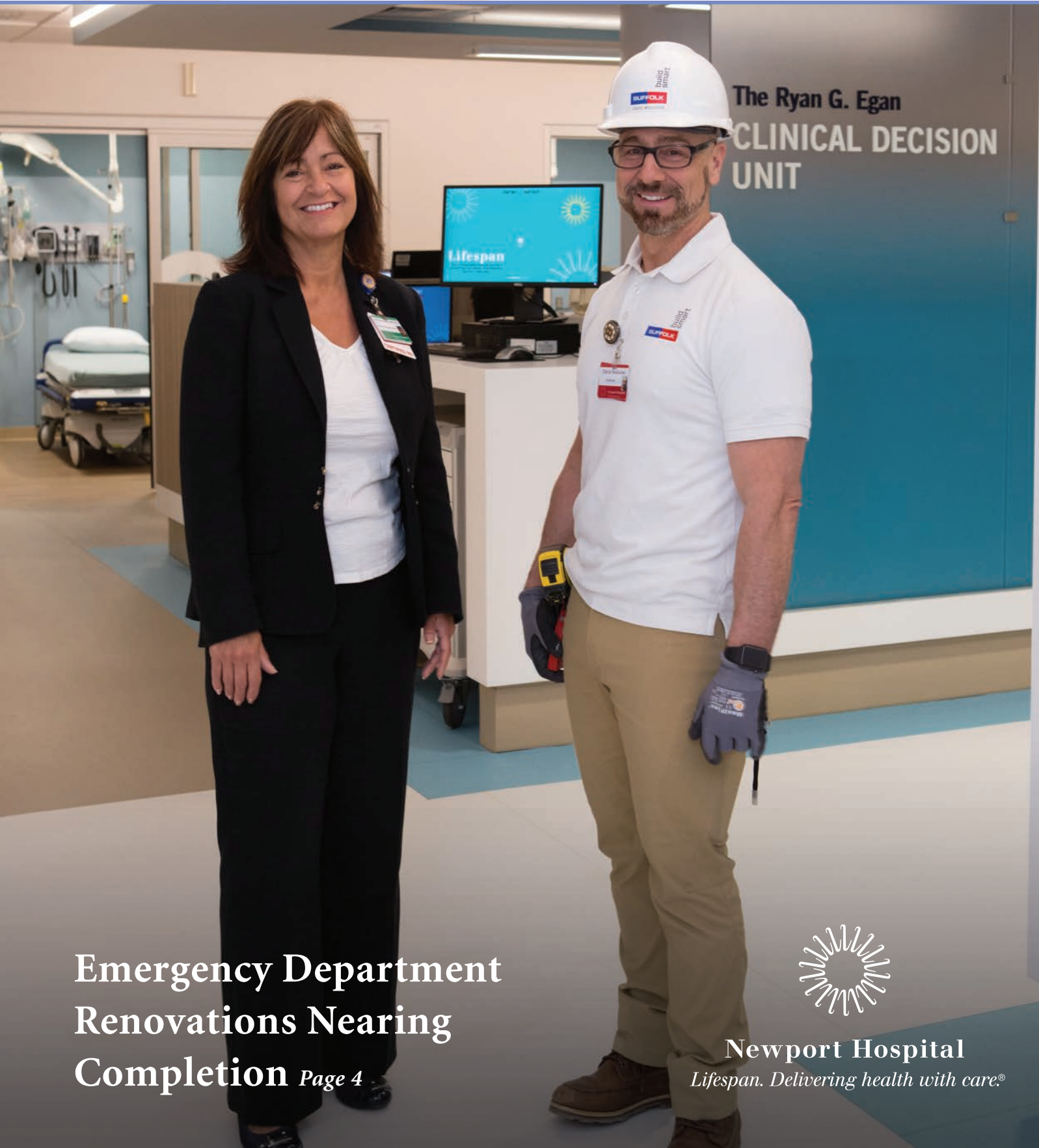


Newport Hospital

2019



**Emergency Department
Renovations Nearing
Completion** *Page 4*



Newport Hospital

Lifespan. Delivering health with care.®



Newport Hospital's supporters are some of the kindest, most generous people I've ever had the pleasure of meeting. So, thank you for being part of this great team!

The hospital itself is part of a great team, too—and that's Lifespan. As such, the people of Aquidneck Island always have direct access to a world-class academic health

care system that offers the most advanced and highest quality medical care in the region.

Whatever care our patients need, wherever they need it, there's a Lifespan solution that has them covered. Your generosity helps make that care possible, and we are forever grateful for your support.



Lawrence A. Aubin Sr.

Chairman, Lifespan
Board of Directors
Chairman, Newport Hospital
Board of Trustees

COVER: Lisa Lima-Tessier tours new emergency department space with construction manager David Mollicone. *More on page 4.*

Photo credit: Kate Lucey



Crista F. Durand

Crista F. Durand

President, Newport Hospital

Every day, I am grateful for the generous support we receive from caring people like you who make up our dedicated donor community. It is my privilege to bring you our 2018 Honor Roll of Supporters: individuals, businesses, foundations, and organizations who have demonstrated their commitment to the health and safety of Aquidneck Island in very real and tangible ways. So much of what we are able to accomplish here would not be possible without these wonderful philanthropists.

In this issue of *Newport Hospital*, I'm proud to share that we have made significant progress toward meeting the fundraising goal for our *Beyond the Building* campaign, which will transform our emergency department (*see p. 4*). Not only will these improvements translate into an even better hospital experience for patients and their families, it will enhance the working environment for the dedicated ED staff who make Newport Hospital their medical home.

Also within these pages you'll read about the newest capabilities in our Lifespan Cardiovascular Institute, made possible by the generosity of guests who attended last year's Summer Celebration as well as the exciting news that Dr. Jeffrey Gaines, a long-time physician in our emergency medicine department, has been appointed as Vice President, Medical Affairs and Chief Medical Officer.

Our hospital means so much to so many, both within our walls and beyond the building. But it is you who mean so much to all of us here. Thank you for helping us fulfill our mission of *Delivering health with care* and for being by our side every step of the way.

New Chief Medical Officer Announced

Jeffrey Gaines, MD, a long-time Newport Hospital emergency medicine department physician, has been appointed Vice President, Medical Affairs and Chief Medical Officer.

After a national search, Dr. Gaines emerged as the top talent to help champion Newport Hospital's mission and move the quality platform forward. He has been a valued member of the emergency medicine team for almost a decade, known among colleagues for his outstanding skills and dedication to patient care, and among patients he is known for his empathy. He brings 14 years of clinical experience in emergency medicine to this role, along with years of service in leadership roles at Newport Hospital. In all these roles, his steadfast leadership and ability to balance and align the physician perspective with the strategic vision and goals of the hospital have been invaluable. He will step into his new role as of July 1.





We're 94% of the Way to Our Emergency Department Goal!

For Lisa Lima-Tessier, Director of Emergency Services at Newport Hospital, the impact of the sweeping expansion and renovations taking place at the emergency department can be summed up in a child's smile.

"We had two children in the ED's new behavioral health unit recently," Lisa explains of the newly opened four-bed pod, which is designed to soothe agitated patients. "These kids felt calm enough to play games with each other and the staff. We got smiles from them. That's incredible."

Providing the best possible patient experience is central to the transformation underway at the ED, the first phase of Newport Hospital's *Beyond the Building* capital campaign. Thanks to the generosity of donors,

the campaign has raised \$11.75 million so far, and construction to almost double the size of the emergency department is progressing rapidly.

With completion of the ED targeted for fall 2019 at a cost of \$12.5 million, Newport Hospital must close the 6 percent funding gap this summer to complete the work.

"I can't thank our donor family enough for their dedication to exceptional health care on Aquidneck Island," says Crista Durand, President of Newport Hospital. "We're on the verge of setting a new standard for patient- and family-centered emergency care. To get there, though, we need the continued support of the community. Every donor makes a difference. Every donation matters."

Since breaking ground in June 2018, work to transform the emergency department includes a new wing with more and larger treatment rooms; a four-bed clinical decision unit for patients who may need more tests or a longer stay in the ED; and a secure behavioral health pod for psychiatric patients. We've tripled the number of triage bays and built a bright new family lounge. A new entrance, reception and waiting area will await visitors.

When completed, the ED will have 29 beds, up from 17, and cover 20,000 square feet—almost twice the space of the original design—alleviating wait times and the overcrowding that often necessitates treating patients in hallways. The final stages of the ED transformation will complete the additional treatment rooms, including those closest to the trauma room for the most acute patients.

“The ED is seeing more people than ever, almost 33,000 a year now, and their needs are increasingly acute and complex,” says Anthony Napoli, MD, Medical Director and Chair of Emergency Medicine. “The work completed in the ED so far has created not just more space but better space. Patients have greater comfort, privacy, and security. And providers have an environment that allows them to practice the best emergency care possible.”



“I can’t thank our donor family enough for their dedication to exceptional health care on Aquidneck Island.”

—Crista Durand

Every element of design in the ED responds to the universal needs of the community as well as specific and vulnerable populations.

“For behavioral health patients, we designed a secure and calming unit to preserve their dignity and privacy,” says Pamela Crocker, Director of Facilities, Services and Planning. “Geriatric patients do better with softer lights, while children respond well to brighter colors, so we built flexibility into room design. Even the flooring has been redesigned to help patients and families navigate. Everything we’ve done, and will do, optimizes the delivery of care.”

“Great things really do happen when great people come together,” says Crista Durand. “Newport Hospital was founded on philanthropy 146 years ago and every milestone since has been achieved with the support of great and generous people. Today’s *Beyond the Building* campaign is no different. We remain steadfast in our commitment to raising the bar on health care excellence in Newport County.”

New Foundation Board of Trustees

Composed entirely of volunteers and led by chair Norey Dotterer Cullen and vice chair Edward D. Feldstein, the Newport Hospital Foundation Board of Trustees supports the hospital's mission and fosters fundraising success that has a direct impact on patients and their families. Recently, the Foundation welcomed five new community leaders to its ranks.



Gail Alofsin is the Director of Corporate Partnerships and Community Relations for Newport Harbor Corporation, where she has held several positions over three decades. Deeply committed to her community, Gail has established partnerships inclusive of many local nonprofits to generate support for their work and actively donates her time in several volunteer leadership roles.



Anne Hamilton is recognized as a philanthropist and volunteer whose contributions have had a profound impact on children, education, community health, and arts and culture in both Newport, RI and Philadelphia, PA. She is a longtime supporter of Newport Hospital and a consistent and generous co-chair of its annual summer celebration.

During a diverse career as a fashion consultant, photo stylist and art editor, **Elizabeth W. Leatherman** has made it a priority to give back to her community. Among her many affiliations, Elizabeth's gifts of time and treasure have touched hospitals, libraries, historical and preservation societies, social service organizations, and more.



A resident of Newport, **Isabella Ridall** is Partner and Business Manager of Newport Shipyard, considered to be New England's premier full-service marina. Throughout a career that's taken her from California to the Bahamas, Isabella has focused much of her time on education and programs that benefit youth. She is a trustee of St. Michael's Country Day School, and a past trustee of IYRS.



Barbara van Beuren is Managing Director and co-owner of Anbau Enterprises, a New York City-based real estate development company. She leads the firm's strategic and financial planning, and risk management. Prior to joining Anbau in 2002, she was Executive Director for the van Beuren Charitable Foundation.

Thank you to all members of the Newport Hospital Foundation Board of Trustees for your dedicated service!

Norey Dotterer Cullen, *Chair* • Edward D. Feldstein, Esq., *Vice Chair* • David S. Gordon, *Secretary*
Michael Dawson, *Vice President, Finance, Treasurer**

Gail Alofsin • M. Therese Antone, RSM • Lawrence A. Aubin, Sr.*** • Timothy J. Babineau, MD***
Holly M. Bannister, MD • Carol R. Bazarsky • Peter Capodilupo • William J. Corcoran • Crista F. Durand, President**
Rita B. Gewirz • Bradford C. Gray, MD • Anne F. Hamilton • Patricia Norton Kidder • Elizabeth W. Leatherman
Paul A. Leys • Juliette C. McLennan • Jonathan H. Pardee • Sandra J. Pattie • James A. Purviance • Isabella Ridall
Sarah Schochet-Henken • Barbara van Beuren • Sharon Wood Prince

*Guest without vote **Ex-officio with vote *** Ex-officio without vote

Your Bones Are in Good Hands

Edward “Ned” Corcoran has been a longtime supporter of Newport Hospital. In fact, the Middletown resident and his wife, Ruth, have championed fundraising and philanthropic efforts for Aquidneck Island’s only hospital for more than 50 years. Ned was also born at the hospital, as were his four siblings, seven children, and grandchildren. Given that history, it’s no wonder he has a fondness for and comprehensive understanding of the good work that goes on there. But it was a fall in his backyard that took Ned’s appreciation of the hospital to a whole new level.

“I was out in my garden pulling weeds and cleaning up over the Labor Day weekend last year when I lost my balance and fell,” Ned recalls. “I hit my leg on a big rock and fractured my femur up by the hip joint. It was a nasty break.”

“My firsthand experience as a patient impressed upon me what a wonderful blessing it is to have a hospital of this magnitude in Newport.”

—Edward “Ned” Corcoran

Fortunately for Ned, Ross Budacki, MD, an orthopedic surgeon with Newport Orthopedics, knew exactly what to do. “Ned’s type of break didn’t require a hip replacement,” he explains. “The best fix for him was to insert an intramedullary rod to help align and stabilize his fracture.”

Since they began seeing patients in January of 2017, Newport Orthopedics, a Lifespan Physician Group



Ross Budacki, MD

practice, has found the “best fix” for more than 2,500 people. Their fellowship-trained and board-certified physicians provide specialized care throughout diagnosis, treatment, surgery and rehabilitation, and their staff does whatever it takes to get patients back to their normal activity levels and their everyday lives.

“We care for a full range of patients from children through adults,” Dr. Budacki notes. “Whether they’re student athletes or weekend warriors with a sports injury, or older folks in need of an upper or lower joint replacement, we employ the same personalized, comprehensive approach. We work with patients, listen to them and figure out the best way to help them.”

For Ned, that included a successful surgical procedure and continuing outpatient rehab at Newport Hospital’s Vanderbilt Rehabilitation Center. “It’s been a long recovery process, but I’m getting better every day, thanks to Dr. Budacki, his team and Newport Hospital.” Ned adds that the facility and operations at Newport Hospital were tremendous, and the level of care he received was extraordinary. “My firsthand experience as a patient impressed upon me what a wonderful blessing it is to have a hospital of this magnitude in Newport County.”

Local Organizations Are Powered by Prince

With a mission to enhance the lives of children and families across Aquidneck Island, Newport Hospital's Frederick Henry Prince Memorial Fund recently awarded a total of \$121,100 to 20 local organizations. The "Powered by Prince" grants support a variety of programs that help area kids lead healthier and more active lifestyles.



**Powered
by Prince**

The F.H. Prince Memorial Fund was established in 2010 when Elizabeth Prince of Newport and her children—Guillaume de Ramel, Diana Oehrli, and Regis de Ramel—donated \$3 million to Newport Hospital to fund activities for children who otherwise might not have access to such programs. Grantees for 2019 will provide youth with a range of unique nutrition education, fitness, and athletic opportunities.

"Aquidneck Island is home to so many incredible programs dedicated to the well-being of our community's children and youth," said Guillaume de Ramel. "It is a privilege to support projects that truly make a difference in the lives of others, and to do so in partnership with Newport Hospital."

Since its inception, the fund has granted more than \$627,000 to organizations in Newport County.

Powered by Prince 2019 Grantees

Bike Newport • Boys & Girls Club of Newport County • Butler Basketball Club/Boys Town • Clean Ocean Access
Island Moving Company • Lucy's Hearth • Middletown Youth Wrestling • Newport County YMCA
Newport County Youth Rugby • Newport Gulls • Newport Little League • Newport Open Space Partnership
Newport Quick Stix • Norman Bird Sanctuary • Potter League for Animals • Sail Newport • Sail to Prevail
Special Olympics Rhode Island • Star Kids • Wayne Turner Indoor Tennis

Doctor on Call

It's not too late! Join Doctor on Call—Newport Hospital's 24/7 on-call physician service to cover you and your family with on-demand patient care, including house calls, phone consults, and in-office visits during the summer months. Enroll today and your membership includes coverage through September 30, 2019.

To learn more about Doctor on Call and other additional services to support your health care experience, including Friend of the Foundation, call 401-845-4339 or visit Lifespan.org/DoctorOnCall.



A Hospitalist is Like the Captain of a Ship

Angus Ross of Portsmouth, RI, is a professor at the US Naval War College and a retired British Royal Navy commander. This past January, he got seasick for the first time—and he wasn't even on a boat. "My whole world was spinning," he recalls, "I was dizzy, nauseous, and vomiting . . . completely incapacitated." Angus was experiencing vertigo caused by labyrinthitis, an inner ear disorder that's usually brought on by a viral or bacterial infection. A hospitalist at Newport Hospital helped diagnose Angus's condition after conducting a battery of tests and determined that specific medication and vestibular therapy was the best treatment option.

If you're not familiar with the term, a "hospitalist" is a physician who practices exclusively within a hospital

setting and leads the patient's care team, coordinating and managing everything from admission through discharge. "As medical care continues to get more complex, you really need to have someone there 24/7/365 who is expert at navigating the everchanging hospital setting," says Hector Derreza, MD, Medical Director of Hospital Medicine at Newport Hospital. "That someone is the hospitalist, who functions like the captain of a ship." Hospitalists collaborate and communicate with specialty physicians and ancillary departments, and—since the hospital is their office—can check in with patients more frequently than primary care physicians or visiting doctors. "The care I experienced as a patient at Newport Hospital was comforting" says Angus. "I couldn't have felt safer or been in more capable hands."

Three Angels Fund Changes Lives

Last December, the Three Angels Fund presented a \$35,000 donation to the Lifespan Cancer Institute at Newport Hospital to support the hospital's outpatient IV therapy lab and patients undergoing cancer treatment. The organization's annual fundraiser at Kempenaar's Clambake Club, has generated nearly \$300,000 for the hospital since 2010.

"The impact the Three Angels Fund has had, and continues to have, on our patients and cancer program is significant," said Crista F. Durand, president, Newport Hospital. "We are so grateful for their generosity and commitment to lifesaving cancer care." The Three Angels Fund was established by cousins Andrew Bulk and Jennifer Lopes to honor the memories of their aunts Eileen Bulk, Ann Pine, and Nan Bulk, who fought courageously before losing their battles to cancer within 17 months of each other. To carry on their legacy of caring, the fund provides assistance to others undergoing cancer treatment. Over the years, the fund's support purchased new infusion chairs and comfort items for patients, and has helped the hospital provide patients with no-cost complementary therapies of Reiki and massage, medical supplies not covered by insurance, and extra supports such as wigs and utilities assistance.



Jennifer Lopes, Crista Durand, and Andrew Bulk

Healing is Job One at Vanderbilt

A visit to the hospital rarely inspires a career move, but it did for Kim Valcourt, a medical assistant from Bristol, RI. Kim was so impressed by the level of service her husband Mike received at the Vanderbilt Wound Care Center at Newport Hospital, she changed jobs to go work there.

In September of 2018, Mike was being treated at a different hospital for cellulitis, a potentially serious infection. “They were telling us his wound was healing when clearly it was not,” Kim remembers. Fortunately, Kim’s aunt, a retired nurse, told her about the center at Newport Hospital and suggested Mike seek treatment there.

“I was truly moved by the comprehensive, patient-centered care he received, and the compassion the doctors and support staff showed us,” she recalls. “So

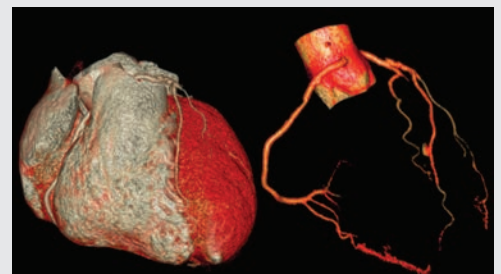
once Mike was home and feeling better, I said to myself, ‘That’s the place where I want to work!’”

Of course, not everybody who goes to the center ends up filling out a job application. But they’re all very pleased with its approach to care. The program uses advanced treatments and state-of-the-art technology to treat chronic wounds—ranging from trauma and nonhealing surgical wounds, to minor burns and pressure ulcers—and boasts a 94 percent healing rate, which is well above industry benchmarks.

“We’re a very cohesive team, more like a family, actually,” says Kelly Hayward, the center’s program manager. “With our staff, it’s not a case of ‘this is my patient’ and ‘this is your patient’ . . . they’re all OUR patients.”

Impact of Philanthropy

Two of the newest and most sensitive tests used for detecting coronary artery disease are now available to patients at Newport Hospital. Made possible by the generous \$533,550 raised at last year’s Summer Celebration, the Lifespan Cardiovascular Institute at Newport Hospital is able to offer both coronary CTA (computed tomography angiogram) and coronary calcium scoring tests.



Coronary CTA is a noninvasive test that visualizes the coronary arteries that supply blood to the heart, allowing physicians to see precisely whether and where there is a blockage or narrowing. For patients with chest pain or shortness of breath, this can determine if the symptoms are related to inadequate blood supply to the heart. “It actually takes longer to get to Providence [from Newport] than it does to perform the test,” says Joseph Weiss, MD, PhD, who is pleased to be able to offer this testing to patients on Aquidneck Island. Calcium scoring uses CT technology to identify the buildup of calcium deposits, or plaque, in the heart’s arteries. Calcium scoring is a valuable method for evaluating the risk of heart attacks in patients who do not have symptoms of chest pain or shortness of breath but may have a family history of heart disease or other cardiac risk factors. The more extensive the deposits, the greater the likelihood of trouble down the line. “When it comes to coronary artery disease, early intervention is absolutely critical and these enhancements to the services available at Newport Hospital will help save lives,” says Dr. Weiss. “The impact of philanthropy should not be underestimated.”

2018 Honor Roll of Supporters

Newport Hospital Foundation is proud to recognize its generous supporters whose philanthropy enables Newport Hospital to provide exceptional, compassionate, patient-centered care to the people of Rhode Island and beyond. Many thanks for your generosity!

ANNUAL DONORS

The donors listed below have made contributions of \$250 and above (not including pledge commitments) during calendar year 2018.

The Ellen Mason Society (\$50,000 and above)

Created to recognize the earliest advocate for building a hospital in Newport, who started the successful movement to raise funds for its construction in 1873.

Anonymous in memory of
Frederick H. Prince, IV
BankNewport
Brown Emergency Medicine
Bill and Jacalyn Egan/Duniry Foundation
Mr. and Mrs. David B. Ford and
The Ford Family Foundation
Richard and Dee Gordon
Mr. and Mrs. Charles N. Hamilton
Jessica Hamilton
Hamilton Family Charitable Trust
Michael R. and Patricia Norton Kidder
The Loeb Family Foundation
Alletta Morris McBean Charitable Trust
The William R. Mershon Trust
Mr. and Mrs. Bernard Nemtzow
Mr. and Mrs. George N. Petrovas
Prince Charitable Trusts
Mr. and Mrs. John T. Reid
Adelaide Roberts Trust
Thomas A. Rodgers Jr. Family Foundation
Mrs. Jay R. Schochet
Estate of Eleanor C. Silvia
van Beuren Charitable Foundation
Charles R. Walgreen III Family

General John A. Hazard Society (\$25,000—\$49,999)

Created to honor an early benefactor who left large tracts of land now known as Ocean Drive, Second Beach, and Sachuest Point to the hospital.

Holly M. Bannister, MD and
Mr. Douglas L. Newhouse
Bazarsky Family Foundation
Peter and Jennifer Capodilupo
Mrs. Robert B. Conner
Mr. and Mrs. Charles A. Dana, III
The de Ramel Foundation
Mr. and Mrs. Thomas F. Gilbane, Jr.
Mr. and Mrs. Peter T. Grauer
The Gudoian Family
Anne and Matt Hamilton

Mr. and Mrs. Peter D. Kiernan, III
The Abigail Norman Prince 1932 Charitable Trust
Mr. and Mrs. James A. Purviance
Ms. Sarah Schochet-Henken and
Ms. Darrah O'Connor
Three Angels Fund
Mr. and Mrs. Archbold D. van Beuren

Henry Ledyard Society (\$10,000—\$24,999)

Created to honor the original founder of Newport Hospital, Henry Ledyard.

Anonymous (2)
Mr. and Mrs. Daniel M. Benson
The John Clarke Trust
Mr. and Mrs. Keith Cullen
Norey Dotterer Cullen
Brittain and John Damgard and Family
Oliver S. and Jennie R. Donaldson Charitable Trust
The Firestone Foundation
Mr. and Mrs. Bernard S. Gewirz
Rita and Jonathan Gewirz
Mr. and Mrs. Jeffrey A. Gouveia, Jr.
Mr. and Mrs. Paul E. Marshall
Lotz Family Foundation
Dr. and Mrs. Thomas E. McGue
Juliette C. McLennan
Newport Hospital Auxiliary
Newport Hospital Medical Staff
Mr. and Mrs. Jonathan H. Pardee
Frederick H. Prince Trust Dated June 03, 1932
and William and Sharon Wood Prince
Mr. and Mrs. John M. Purdy, Jr. and the
Winifred M. Purdy Foundation
Mr. and Mrs. Amory L. Ross
Shriners of Rhode Island Charities Trust
Mr. and Mrs. John J. Taylor, III and the
Taylor Family Foundation
Ms. Anna W. Templeton-Cotill
Mrs. Marjorie H. Turley
Ms. Barbara van Beuren and
Mr. Stephen L. Glascock
Mrs. Diane B. Wilsey

The Vanderbilt Society (\$5,000—\$9,999)

Created to honor Cornelius Vanderbilt, whose wife contributed funds for the Vanderbilt Building, opened in 1903.

Aquidneck Radiologists, Inc.
Dr. and Mrs. Timothy J. Babineau
Mr. and Mrs. Peter Barrett
Kathleen Beckett
Mr. and Mrs. J. Stuart Bevan
Mr. George T. Boyer
Dr. Orla M. Brandos
Mr. and Mrs. Richard I. Burnham
Mr. Robert A. Chase
Mr. Michael R. Corcoran
Dr. and Mrs. David Cunningham
Mr. and Mrs. Edmond de La Haye Jousselein
Mr. and Mrs. David A. Donatelli
Crista and Stephen Durand
Mr. and Mrs. James E. Eagan and the
Eagan Family Foundation
Mrs. Barbara O. Epstein
Mr.* and Mrs. Jonathan G. Epstein
Fidelity Pooled Income Charitable Beneficiary
Fund Account
Mr. and Mrs. Robert F. Fischer
Mr. and Mrs. David S. Gordon
Mr. and Mrs. Samuel Hamilton III
Hope Hospice & Palliative Care
John D. and Katherine A. Johnston Foundation
Mr. Colin Keith and Ms. Virginia Decker
John A Lema Jr. Irrevocable Living Charitable
Gift Fund
Stephen and Diana Lewinstein
Honorable and Mrs. Ronald K. Machtley
Mr. and Mrs. Kenneth Pattie
Mr. David W. Ray
Ms. Kathryn K. Streator
Mr. Oakleigh B. Thorne and Ms. Susan Dye
Tufts Health Plan
William and Sharon Wood Prince

The Rovensky Society (\$2,500—\$4,999)

Created to honor John Rovensky, who provided funds in memory of his wife, Mae Caldwell Rovensky, for construction of the Rovensky Building, completed in 1962.

Advanced Building Concepts
Amica Companies Foundation
The Aubin Family
Mrs. Barbara M. Benson
Mr. and Mrs. Richard N. Bohan
Campo & Company Events
Mrs. Gerald F. Cerce
The Claflin Company

Cox Business
 Mr. and Mrs. Matthew Crocker
 Mr. and Mrs. Peter R. Dunn
 George and Marty Easley
 Exquisite Events
 Mrs. Lila O. Farley
 Gilbane Building Company
 Mr. and Mrs. Peter W. Gonzalez
 Mrs. Jane Rovensky Grace
 Gustave White Sotheby's Int'l Realty
 Mr. and Mrs. N. Peter Hamilton
 Samantha Ohrem Hamilton
 Mr. and Mrs. Patrick O. Hayes, Jr.
 Mr. Chandler Hovey and Ms. Valerie Urry
 Mr. and Mrs. Colin P. Kane
 Mr. and Mrs. James Lanzillo
 Mr. and Mrs. William Q. MacLean, Jr.
 Dr. and Mrs. Michael Mason
 Mr. and Mrs. Earl McMillen, III
 Open Oyster
 Mr. and Mrs. Torre A. Peterson
 Mr. Oliver H. Quinn
 Mr. and Mrs. David L. Reed
 Scarlet's Mission, Inc.
 Mr. and Mrs. Jeffrey M. Siegal
 Snavely Associates
 Mr. and Mrs. William L. Wallace
 Mr. and Mrs. Jacques West
 Richard C. Young & Co., LTD
 Dr. and Mrs. Orest V. Zaklinsky
 Michael J. Zipp and Family Charitable Fund

**The Corcoran Family Circle
 (\$1,000—\$2,499)**
 Created to honor three generations of
 advocacy and support from the Corcoran
 family in Newport.

Anonymous (4)
 Ms. Lisa M. Abbott
 M. Therese Antone, RSM
 Applied Plastics Technology, Inc.
 Dr. Piamarie Ballarin-Feldman and
 Mr. Ronald B. Feldman
 Ms. Merrilyn Bardes
 Bellevue Shopping Center Associates
 Dr. Patricia Bilden and Mr. Philip Bilden
 Mr. and Mrs. Daniel J. Bills
 Bristol County Elks #1860
 Mr. and Mrs. John Brooks
 Captain and Mrs. Nicholas Brown
 Mr. and Mrs. Robert O. Bulk
 Mrs. Raymond W. Caine, Jr.
 Mr. and Mrs. James F. Carlin
 Mr. and Mrs. Duncan A. Chapman
 Dr. and Mrs. George T. Charlton
 Mrs. E. Taylor Chewning, Jr.
 Ms. Wylene R. Commander
 Mr. and Mrs. Brooke Connell
 Ms. Anita W. Conway
 Mr. and Mrs. Nicholas P. Coogan
 Mr. and Mrs. Edward B. Corcoran
 Mr. and Mrs. Daniel G. Corrigan
 Mr. and Mrs. Simon Davidson
 Michael and Mona Dawson
 Ms. Lorian De Crescenzo
 Ernest and Jeanette Denomme Trust Fund II
 Dr. and Mrs. Hector Derreza
 DiBona Revocable Trust
 Mr. Richard H. Donnell
 Mr. and Mrs. William A. Durgin
 Mrs. Francis G. Dwyer
 Mr. and Mrs. Robert S. Edenbach
 Mr. and Mrs. John H. Ellis
 Joseph and Maryann England
 Mr. and Mrs. Brad Faxon, Sr.

Mr. Louis A. Fazzano
 Edward D. and Barbara L. Feldstein
 Commander and Mrs. Tylor Field, II
 FNZ Foundation, Inc.
 Jane Garnett and David Booth
 Mr. and Mrs. Peter Gerard
 Mr. and Mrs. Lawrence R. Glenn
 Mrs. Turkiz Gokgol
 Mr. and Mrs. David J. Goodrich
 Drs. Bradford and Marjory Gray
 Mr. and Mrs. Matt Grenier
 Mr. and Mrs. James B. Gubelmann
 The John A. Hartford Foundation, Inc. Matching
 Grants Program
 Mr. Vernon A. Harvey
 Mr. and Mrs. Charles J. Hayes
 Michael Hayes Company, Inc.
 Mr. and Mrs. Robert J. Healey
 Mr. and Mrs. Andrew Heaney
 George and Nannette Herrick
 Kim H. Herrlinger
 Mr. Marcus Holloway
 Mrs. Charles L. Hopper
 Duncan and Jeannie Ingraham
 Mr. and Mrs. Pierre D. Irving
 Ms. Mary M. Jennings
 Mr. and Mrs. Donald N. Kaull
 Ms. Dodie Kazanjian and Mr. Calvin Tomkins
 Mr. Patrick J. Kerins and
 Ms. Terry H. Morgenthaler
 Pam and George Kirk Family Fund
 Ms. Joann C. Kuss
 Dr. and Mrs. Jon K. Lambrecht
 Mr. and Mrs. Bernie Lambrese
 Mrs. Bruce R. Lang
 Mr. Anthony M. Leach and Ms. Jane Corcoran
 Erin and Tom Littlewood
 Captain and Mrs. Hugh F. Lynch
 Mr. and Mrs. Brad Margus
 Captain and Mrs. Joseph P. Marnane
 Ms. Joan M. Mason
 Mr. and Mrs. Stephen P. Massed
 McLaughlin & Moran, Inc.
 Patrick and Pamela McLaughlin
 Ms. Stephanie W. McLennan
 Mr. Zalman D. Newman
 Reverend Henry P. Nichols
 The North Family Trust
 Mrs. Carol O'Malley
 Mr. and Mrs. J. Timothy O'Reilly
 Mr. and Mrs. John S. Palmer
 Dr. Alessandro Papa and
 Dr. Gwyneth Granton
 Mr. and Mrs. G. Thomas Patton
 Ms. Dallas Pell
 Pepsi Beverage Company
 Mr. and Mrs. John D. Picotte, Jr.
 John D. Picotte Family Foundation
 The Rabinowitz Foundation Inc.
 Mr.* and Mrs. Peter W. Rector
 Dr. and Mrs. James S. Reibel
 Mr. Owen Philip Reid, Jr.
 Mr. and Mrs. Patrick E. Rooney
 Russell Morin Catering & Events
 Savings Institute Bank & Trust
 Dr. and Mrs. Philip J. Schmitt
 Mr. and Mrs. Richard Sebastiao
 MG and Mrs. Stephen R. Seiter
 Mr. and Mrs. Patrick Sheerin
 Mr. and Mrs. Albert K. Sherman, Jr.
 Shoreline Audio Visual
 Mr. and Mrs. Gordon Stewart
 Mr. and Mrs. Earle C. Stubbs
 Dr. Catherine Sullivan and Mr. RJ Sullivan
 Dr. and Mrs. Leonard C. Taddei
 Ms. Geraldine M. Taylor
 The Meg and Don Steiner Charitable Fund

Ms. Ruth B. Thumbtzen
 Mr. Victor R. Trautwein, Jr.
 University Surgical Associates, Inc.
 Ms. Tesa van Munching
 Mr. and Mrs. Philip P. Virgadamo
 Mr. Peter J. Walsh
 Mr. and Mrs. Jay H. Weibel, Jr.
 Dr. Joseph B. Weiss and Ms. Georgette M. Pan
 Drs. Jane and John Williams
 Dr. and Mrs. Harrison M. Wright
 Mr. and Mrs. James L. Wright

Benefactors (\$500—\$999)

Anonymous (1)
 Mr. and Mrs. Andrew Arkin
 Mr. and Mrs. Brian G. Bardorf
 Dr. Virginia H. Bass and
 Mr. Maciej J. Kieszowski
 Ms. Livvy Dinneen and Mr. Michael Berns
 The Brandt Family Fund
 Mr. and Mrs. Robert L. Breault
 Mr. and Mrs. Joseph W. Brinza
 Mr. and Mrs. Josiah Bunting
 Mr. Patrick L. Burke
 Mr. and Mrs. Paul L. Cardoza
 Captain and Mrs. Robert L. Ceres
 Jane N. Chandley, NP
 Mrs. Marion O. Charles*
 Mr. Donald C. Christ
 Mrs. Wanda P. Coderre
 Mr. and Mrs. Christopher F. Coen
 Mr. and Mrs. Lawrence J. Cohen
 Mrs. Elie J. Cohen
 Mr. and Mrs. William J. Corcoran
 Mr. and Mrs. Peter T. Crowley
 Mrs. Howard G. Cushing, Jr.
 Ms. Emily M. DeGrace
 Ernest and Jeannette Denomme Irrevocable
 Trust
 Mr. and Mrs. Peter M. DiBari
 Mr. and Mrs. Joseph T. Dockery, Jr.
 Nick and Diane Dominick
 Mr. and Mrs. Mohamad Farzan
 Ms. Felise B. Feingold
 Sandra J. Flowers, PhD
 Mrs. Melissa J. Fournier
 Jae and John H. French, II
 Mr. and Mrs. James E. Garman
 Dr. and Mrs. Alexander R. Gaudio
 Mr. and Mrs. Jeffrey L. Gordon
 The Reverend Everett H. Greene
 Mr. and Mrs. Peter W. Harris
 Mrs. Christopher Hayes
 Mr. and Mrs. Carroll J. Hughes
 Dr. and Mrs. George A. Kates
 Mr. and Mrs. Roger H. King, Jr.
 Ms. Susan F. Korber, MS, RN
 Dr. Steven Lampert and Dr. Anita Feins
 Dr. Leena K. Langeland
 Mrs. William B. Leatherbee, Jr.
 Mr. and Mrs. William L. Leatherman
 Mr. William H. Leys
 Mr. and Mrs. Derek L. Limbocker
 Stanley and Martha Livingston Fund
 Mr. Richard C. Loebs, Jr.
 Mr. and Mrs. Richard J. Lynn
 Dr. James O. Maher and
 Dr. Catherine Labiak-Maher
 Mr. and Mrs. Todd Martin
 Dr. Stephanie Maryeski and Mr. Kyle Maryeski
 Mr. James M. Mason
 Mr. and Mrs. James J. McAllister, Jr.
 Mr. and Mrs. Kevin M. McCarty
 John and Brookie McCulloch
 Mr. and Mrs. Michael P. McDonough
 Mr. and Mrs. Dennis H. McNamara

Mr. and Mrs. Sean McNeill
 Mr. and Mrs. Joseph F. Mele
 Lisa and Richard Morrison
 Mr. W. Lincoln Mossop, III
 Mr. and Mrs. Harry E. Mrozowski
 Ms. Cheryl L. Mulcahy
 Mr. Arthur W. Murphy
 Nagle Family Charitable Trust
 Newport Tent Company
 W. Walker Noble
 Dr. and Mrs. Andrew Nowak
 Dr. Jeanne M. Oliva
 Peak Events
 Mr. and Mrs. Christopher T. H. Pell
 Perfection Valet Parking
 Mrs. Susan M. Rea
 Ms. Deborah L. Robinson
 Ms. Janet L. Robinson
 Captain and Mrs. Bayard W. Russell
 Mr. and Mrs. David M. Ryan
 Mr. and Mrs. Andrew A. Sadanowicz
 Salve Regina University
 Ms. Jolene S. Sarkis
 Mr. and Mrs. William D. Sheehan
 Mr. and Mrs. Douglas B. Shewring
 Mr. and Mrs. Robert M. Silva
 Ms. Sandra J. Silvia
 Mrs. Rita D. Slom
 Mrs. Stephen W. Spencer
 Dariusz R. Stachurski, MD
 Colleen M. Sullivan
 Julia S. Tassinari, MD
 Mr. David A. Thalmann
 Mr. Asheton C. Toland
 Dr. and Mrs. James Valente
 Vickers' Liquors
 Mr. and Mrs. Robert A. Vincent
 Mamie and Rich Wakefield
 Mr. and Mrs. Daniel J. Wall
 Mr. Michael F. Walsh and Ms. Susan K. Ruf
 Ms. Deborah L. Weiland and
 Mr. Ronald Subourne
 The Honorable and Mrs. Francis J. West

Patrons (\$250—\$499)

Ms. Leith McLean Adams
 Captain and Mrs.* Richard G. Alexander
 Mr. and Mrs. John R. Alofsin
 Ms. Monica A. Anderson
 Mr. and Mrs. Peter Arment
 Mrs. J Lorraine Babcock and
 Mr. Ronald Moore
 Ms. Kathleen Bentley
 Mr. and Mrs. Norman R. Beretta
 Mr. and Mrs. H. William Breyer, IV
 Mr. and Mrs. Wiley T. Buchanan, III
 Captain and Mrs. Roger L. Buck
 Ms. Victoria M. Byrd
 C & S Portable
 Mr. and Mrs. James L. Carroll
 Ms. Nancy J. Carroll
 Mr. Jack V. Cipriano
 Ms. Beverly J. Clark
 Mr. and Mrs. William Coble
 Ms. Kathleen A. Collins
 Ms. Anne M. Cooney
 Ms. Trudy Coxe and Mr. James P. Gaffney
 Mrs. Frederick A. Cushing
 Mr. and Mrs. John J. DaPonte, Jr.
 Ms. Theresa M. Degan
 Ms. Elaine Dolley
 Mr. Charles A. Edenbach, III
 Dr. and Mrs. Larry A. Evans
 Mr. and Mrs. William R. Farrell
 Dr. and Mrs. Edwin G. Fischer

Mr. and Mrs. Kenneth Fransson
 Dr. Steven F. Freedman and
 Linn Foster Freedman, Esq.
 Ms. Nancy Galivan
 Mr. Samuel Gillson
 Mr. and Mrs. John J. Greichen
 Mr. and Mrs. Paul J. Grimes, Jr.
 Mr. John Grosvenor and Ms. Cheryl Hackett
 Mrs. Patricia I. Wolfe Gundersen
 Dr. and Mrs. Brian P. Hogan
 Admiral and Mrs. James R. Hogg
 Mr. and Mrs. David Holmes
 Mrs. Paul C. Houston
 Ms. Sharon Hussey
 Mr. Severn Ker
 Ms. Susan M. Killebrew
 Dr. and Mrs. Farrel I. Klein
 Dr. and Mrs. John F. Kneeland, Jr.
 Dr. and Mrs. Michael N. Knowlan
 Mr. and Mrs.* John M. La Rocca, Sr.
 Dr. Reynold T. and Mrs. Marlene A. Larsen
 Mr. Benedict Leca
 Mr. Joseph S. Logan
 Ms. Michelle Lurhmann
 M F Properties
 Ms. Christine E. Marchese
 Mr. Christopher Monteiro
 Mr. and Mrs. Robert P. Moran, Jr.
 Mr. Joseph A. Moscatelli
 Mr. Ira E. Murphy
 Mrs. Edward J. Murtaugh
 Anthony M. Napoli, MD
 Ms. Jennifer Nassour
 Mr. and Mrs. David B. Nathanson
 Newport Grand Casino
 Mrs. Rochelle Ohrstrom
 Mr. and Ms. Paul Onofrio
 Mr. Thomas P. Palmer and
 Ms. Dominique Alfandre
 Mr. and Mrs. David R. Pedrick
 Ms. Tripler Pell and Mr. Tawfik Hammoud
 Mr. and Mrs. William J. Peresta
 Ms. Barbara Pierce
 Mrs. George W. Pike
 Mrs. Veronica A. Probert, RN
 Mr. and Mrs. Andrew A. Radel
 Ms. Patricia N. Rakolta
 Mr. and Mrs. Jesse Randall
 Cynthia S. Reed, Esq.
 Mr. and Mrs. Andrew Reilly
 Mr. and Mrs. Craig Richardson
 Ms. Lesley P. Riva
 Mr. and Mrs. Harald Rosengren
 Mr. and Mrs. Ernst Rothe
 Mr. and Mrs. John S. Schieffelin
 Mr. and Mrs. William R. Scott
 Todd and Sharon Seabold
 Ms. Gail F. Silechnik
 Mr. Marshall T. Slayton
 Mrs. John J. Slocum, Jr.
 Commander and Mrs. Philip A. Smith
 Ms. Sarah J. Smyth
 Ms. Jean Sweeney
 Mr. Bernard Taradash
 Mr. and Mrs. Adams Taylor
 Commander Audrain M. Triplett, USN Ret.
 Mrs. Judith A. Tucker
 Dr. and Mrs. Anthony A. Walsh
 Carol, Joshua, and Rachael Wang
 Mrs. Judith A. Webb
 Capt. Charles F. Weishar, USN Ret.
 Mr. and Mrs. Rian M. Wilkinson

FOUNDERS

The donors listed below have made lifetime gifts and commitments of \$25,000 and above

\$2,500,000 and above

Alletta Morris McBean Charitable Trust
 Frederick H. Prince Trust Dated June 03, 1932
 and William N. Wood Prince and
 Sharon Baron Wood Prince
 Frederick H. Prince Trust Dated June 03, 1932
 and Ms. Elizabeth Prince de Ramel,
 Ms. Diana Oehrli,
 Mr. and Mrs. Guillaume de Ramel,
 Mr. Regis de Ramel
 van Beuren Charitable Foundation

\$1,000,000—\$2,499,999

Bill and Jacalyn Egan/Duniry Foundation
 Hamilton Family Charitable Trust
 Jay R.* and Suzette D. Schochet
 Gloria Nagy and Richard Saul Wurman and
 The Gershman Family Foundation

\$500,000—\$999,999

AR Global Investments, LLC partners:
 Shelley D. and Nicholas S. Schorsch,
 Elizabeth A. and William M. Kahane,
 Dr. Shirley Madhere-Weil and
 Edward M. Weil, Jr.
 BankNewport
 Mr. Gilbert S. Kahn* and
 Mr. John J. Noffo Kahn
 Michael R. and Patricia Norton Kidder
 Newport Hospital Auxiliary

\$250,000—\$499,999

Harold J. Brooks Fund
 Brown Emergency Medicine
 Peter and Jennifer Capodilupo
 The John Clarke Trust
 Oliver S. and Jennie R. Donaldson Charitable
 Trust
 Mr.* and Mrs.* John R. Drexel, III
 Estate of Evelyn Aronson Goodman
 Richard and Dee Gordon
 The Gudoian Family
 Bernard and Doris Nemtzow
 Newport Emergency Physicians, Inc.
 Mr. and Mrs. George N. Petrovas
 Prince Charitable Trusts
 Mr. and Mrs. James A. Purviance
 Thomas A. Rodgers Jr. Family Foundation
 Three Angels Fund

\$100,000—\$249,999

Anonymous (1)
 Samuel and Diana S. Adelson Memorial Fund
 Dr. Holly M. Bannister and
 Mr. Douglas L. Newhouse
 Mr.* and Mrs.* George Botvin
 Mrs. Jean Braman*
 Mr. Richard L. Bready
 Estate of Natalie D. Brown
 Carnegie Abbey Club
 Mr. Guy F. Cary*
 The Champlin Foundation
 Mrs. John R. Donnell
 Louis A. Fazzano
 FNZ Foundation, Inc.

* deceased

Mr. and Mrs. David B. Ford and
The Ford Family Foundation
Mr. and Mrs. Bernard S. Gewirz
Mr. and Mrs. Thomas F. Gilbane, Jr.
Mrs. Jane Rovensky Grace
Evelyn A.J. Hall Charitable Trust
Anne and Matt Hamilton
Mr. and Mrs. Charles N. Hamilton
Mrs. Dorrance H. Hamilton*
Dorrance H. Hamilton Charitable Lead Trusts
Hamilton Fish Webster Medical Fund
Mr. Vernon A. Harvey
Grace L. Holland Trust
The Loeb's Family Foundation
Juliette C. McLennan
The William R. Mershon Trust
Mr. and Mrs. Jonathan H. Pardee
Ms. Elizabeth Prince de Ramel
Mr. and Mrs. John M. Purdy, Jr. and
the Winifred M. Purdy Foundation
Mr. and Mrs. John T. Reid
The Ricci and Fischer Families
Adelaide Roberts Trust
Arthur and Lynda Sampson
Mr.* and Mrs. W. Sydnor Settle
Mr.* and Mrs. John A. van Beuren
Mrs. Diane B. Wilsey

\$50,000—\$99,999

Anonymous (2)
Aquidneck Radiologists, Inc.
Mrs. Elizabeth Arnold*
Hugh D. Auchincloss III*
Mr. and Mrs. Richard E. Baierlein
The Frank Stanley Beveridge Foundation
George T. Boyer
Braman and White LLC
Mr. Robert A. Chase
Dr.* and Mrs. Elie J. Cohen
Mr.* and Mrs.* Eugene P. Conese, Sr. and
the Conese Foundation, Inc.
Mr. and Mrs. Edward B. Corcoran
Mr. Michael R. Corcoran
Ms. Norey Dotterer Cullen
Brittain and John Damgard and Family
The de Ramel Foundation
Mr. and Mrs. Peter R. Dunn
Mrs. Barbara O. Epstein
The Firestone Foundation
Fleet Bank
Mr.* and Mrs.* Charles P. Fortier
Rita and Jonathan Gewirz
Gilbane Building Company
Mr. Thomas P. Gill and Dr. Christine A. Gill
Mr. and Mrs. David S. Gordon
Jessica Hamilton
William Randolph Hearst Foundation
Henry Heffernan Trust
Estate of Joanne V. Hologgitas
John A. Lema Jr. Irrevocable Living Trust
Charitable Gift Fund
Estate of Roberta V. Livermore
Dr. and Mrs. Thomas E. McGue
Newport Daily News
Newport Hospital Medical Staff
NewportFed Charitable Foundation
People's Credit Union
Rhode Island Foundation
Estate of Jane A. Ridgway
Mr. and Mrs. Amory L. Ross
The Schochet Companies

Ms. Sarah Schochet-Henken and
Ms. Darrah O'Connor
Shriners of Rhode Island Charities Trust
Estate of Eleanor C. Silvia
Small Island Big Hearts
Barbara W. Sturtevant Trust
Virginia Treherne-Thomas and the
Charles Sumner Bird Charitable Foundation
Mr. and Mrs. Bruce G. Tucker
Mr.* and Mrs. Joseph F. Turley
Mr. and Mrs. Archbold D. van Beuren
Mr. and Mrs. Alexander von Auersperg
Charles R. Walgreen III Family
Dr. Scott E.* and Mrs. Carol Wang
Mr. and Mrs. Frederick J. Warren
Mr. Harold B. Werner*
William and Sharon Wood Prince

\$25,000—\$49,999

Anonymous (2)
Amica Mutual Insurance Company
Annie Laurie Aitken Charitable Lead Trust
M. Therese Antone, RSM
Aquidneck Medical Associates, Inc.
Thomas P. and Barbara J. Arcangeli
Bank of America Charitable Foundation
Bazarsky Family Foundation
Mr. and Mrs. Daniel M. Benson
Dr. Patricia Bilden and Mr. Philip Bilden
Mr. and Mrs. Richard N. Bohan
Dr. and Mrs.* John F. Brady
Dr. David A. and Carolyn Brill
Mr.* and Mrs. Raymond W. Caine, Jr.
Dr.* and Mrs.* Anthony T. Carrellas
Mr. and Mrs. Todd A. Cipriani
The Clafin Company
Dr. and Mrs. John S. Coldiron
Captain* and Mrs.* Robert B. Connelly
Mrs. Robert B. Conner
Ms. Anita W. Conway
Mr. and Mrs.* William W. Corcoran
August and Carolyn Cordeiro
Dr. Mercedes S.* and
Mr. Robert R. Coulombe, Sr.*
Dr. Triste M. Coulombe and
Mr. Aaron Conant
Dr. and Mrs. David F. Cunningham
Ms. Meriel R. Curren*
Mr. and Mrs. Peter S. Damon
Mr. and Mrs. Charles A. Dana, III
The Dana Foundation
Ernest and Jeanette Denomme Trust Funds
Mr. Richard H. Donnell
Mrs. Walter Douglas*
Crista and Stephen Durand
Mr. and Mrs. William A. Durgin
Mrs. Joan K. Edenbach
Mr. and Mrs. Robert S. Edenbach
Mr. Paul B. Edgerley
Mr. and Mrs. John H. Ellis
Joseph and Maryann England
Drs. Christopher and Susan Erstling
Dr. Steven F. Freedman and
Mrs. Linn Foster Freedman
Senator June N. Gibbs*
Mr. Donelson C. Glassie, Jr.*
Mr. and Mrs. Peter T. Grauer
The John A. Hartford Foundation, Inc. Matching
Grants Program
Mrs. Lynette B. Harvey*
Mr. and Mrs. George G. Herrick
Dr.* and Mrs. Charles L. Hopper

Mr. Colin Keith and Ms. Virginia Decker
Mr. and Mrs. Peter D. Kiernan, III
Mary Ann Hamilton Lamont
Mr.* and Mrs. Bruce R. Lang
Mr. William H. Leys
Mrs. Virginia MacMulklin*
Mr. and Mrs. Stephen P. Massed
Dr. Alexander A. and
Mrs. Donna L. McBurney
Dr. and Mrs. Terrence R. McWilliams
Memorial Funeral Home
Mr. Albert R. Naar and Ms. Judith A. Kelly
Mrs. Isabel Y. Negus*
Newman's Own, Inc.
Newport Harbor Corporation
The North Family Trust
Mr. Richard S. Palmer*
Dr. Alessandro Papa and
Dr. Gwyneth Granton
Mr. and Mrs. Kenneth Pattie
Mr.* and Mrs. Eugene L. Pederson
Senator* and Mrs.* Claiborne Pell
Richard and Patricia* Plotkin
The Abigail Norman Prince 1932 Charitable
Trust
Mr. and Mrs. Jamie Purviance
The Paul and Gladys Richards Charitable
Foundation
Mr. and Mrs. Craig Richardson
Mr.* and Mrs. Thomas A. Rodgers, Jr.
Mr. and Mrs. Albert K. Sherman, Jr.
Mr. Robert T. Smales
Mr.* and Mrs.* Karl B. Smith, Jr.
Mrs. Ineko I. Stephan
Mr.* and Mrs.* Arthur J. Suddaby
Taylor & Partners, Inc.
Mr. and Mrs. John J. Taylor, III and
the Taylor Family Foundation
Mrs. Mary L. Turner*
University Surgical Associates, Inc.
Mr. and Mrs. George A. Vecchione
Vigneron Memorial Fund
Mr. George H. Warren

LIVING HERITAGE SOCIETY

The donors listed below have made a future gift provision in their wills, or in their estate plans, for this hospital.

Anonymous (3)
Martin B. Brandt
Mr. Joseph W. Brinza
Mr. Robert A. Chase
Michael and Mona Dawson
Mr. Richard H. Donnell
Barbara O. Epstein
Mr. Louis A. Fazzino
Jae French
Mr. Vernon A. Harvey
James and Jane Moore
Mr. and Mrs. Bernard Nemtsov
Zalman D. Newman
Mr. and Mrs. John M. Purdy, Jr.
Mr. James A. Purviance
Paul and Nancy Quattrucci
Mr. and Mrs. John T. Reid
Mrs. Dorothy G. Riesmeyer
William and Sharon Wood Prince

* deceased

We apologize for any names inadvertently not included. Please call 401-845-1536.

BEYOND THE BUILDING CAMPAIGN DONORS OF \$250+

Anonymous (2)
Anonymous in memory of
Frederick H. Prince, IV
M. Therese Antone, RSM
AR Global Investments, LLC partners:
Shelley D. and Nicholas S. Schorsch,
Elizabeth A. and William M. Kahane,
Dr. Shirley Madhere-Weil and
Edward M. Weil, Jr.
Dr. and Mrs. Timothy J. Babineau
BankNewport
Mr. Douglas L. Newhouse and
Dr. Holly M. Bannister
Bazarsky Family Foundation
Mrs. Barbara M. Benson
Karen and Stuart Bevan
George T. Boyer
John F. Brady, PhD
Dr. Orla M. Brandos
Brown Emergency Medicine
Ms. Victoria M. Byrd
Peter and Jennifer Capodilupo
Linda Cerce
Mr. Jack V. Cipriano
The John Clarke Trust
Kelley Coen
Mrs. Robert B. Conner
Matthew and Pamela Crocker
Norey Dotterer Cullen
Dr. David and Beth Cunningham
Mr. and Mrs. Charles A. Dana, III
The Dana Foundation
Mr. and Mrs. John J. DaPonte, Jr.
Michael and Mona Dawson
Loriana De Crescenzo
Oliver S. and Jennie R. Donaldson
Charitable Trust
Crista and Stephen Durand
Bill and Jacalyn Egan/Duniry Foundation

Mrs. Barbara O. Epstein
Mr. and Mrs. Edward D. Feldstein
The Firestone Foundation
Pamela and David B. Ford
Jane Garnett and David Booth
Rita and Jonathan Gewirz
Bernard S. and Sarah M. Gewirz
Mary and Tom Gilbane
Gonzalez Family Foundation
Mr. and Mrs. David S. Gordon
Richard and Dee Gordon
Drs. Bradford and Marjory Gray
The Reverend Everett H. Greene
Gudoian Family
Gustave White Sotheby's Int'l Realty
Ms. Jessica Hamilton
Hamilton Family Charitable Trust
Mr. and Mrs. Charles N. Hamilton
Mr. and Mrs. Paul E. Marshall
The John A. Hartford Foundation, Inc. Matching
Grants Program
Mr. and Mrs. David Holmes
Mrs. Joan R. Hopper
Mr. and Mrs. Duncan N. Ingraham
John D. and Katherine A. Johnston Foundation
The Edward W. Kane and Martha J. Wallace
Family Foundation
Michael R. and Patricia Norton Kidder
Mr. and Mrs. Bernie Lambrese
Mr. and Mrs. James Lanzillo
Dr. Reynold T. and Mrs. Marlene A. Larsen
John A. Lema, Jr.
Erin and Tom Littlewood
The Loebs Family Foundation
Lotz Family Foundation
Captain and Mrs. Hugh F. Lynch
Alletta Morris McBean Charitable Trust
Dr. and Mrs. Thomas E. McGue
Patrick and Pamela McLaughlin

Judy Clagett McLennan
Ms. Sara Meirowitz and
Mr. Daniel Herchenroether
Dr. John B. Murphy and
Dr. Anne W. Moulton
Bernard and Doris Nemtzow
Newport Hospital Auxiliary
Newport Tent Company
NewportFed Charitable Foundation
Mr. and Mrs. Robert R. Novick
Mr. and Mrs. J. Timothy O'Reilly
Jonathan and Bettie Pardee
Sandra and Ken Pattie
Mr. and Mrs. David R. Pedrick
George and Susan Petrovas
Prince Charitable Trusts
John and Linda Purdy
Mr. and Mrs. James A. Purviance
Dr. and Mrs. James S. Reibel
Thomas A. Rodgers Jr. Family Foundation
Kathy and Amo Ross
Mrs. Jay R. Schochet
Todd and Sharon Seabold
Mr. and Mrs. William D. Sheehan
Mr. and Mrs. Albert K. Sherman, Jr.
Ms. Sandra J. Silvia
Ms. Sarah J. Smyth
Snavelly Associates
Dr. and Mrs. Charles L. Stengel
Ms. Kathryn K. Streator
Eddy and John J. Taylor III
Mrs. John A. van Beuren
van Beuren Charitable Foundation
Charles R. Walgreen III Family
Judith A. Webb
Mr. and Mrs. James L. Wright
Michael J. Zipp and Family Charitable Fund

as of 12/31/18



BEYOND the BUILDING

The Campaign for Newport Hospital

To learn how you can help support the
campaign, please call 845-1617.

<https://giving.lifespan.org/Newport/Beyond-the-building-donate>



Newport Hospital
Lifespan. Delivering health with care.®
11 Friendship Street
Newport, RI 02840

If you do not wish to receive mail solicitations from Newport Hospital, or from other Lifespan institutions, please email privacyofficer@lifespan.org, call 866-626-0888 or 401-444-6500 and leave a message, or write to Lifespan Privacy Officer, 225 Carolina Ave, Providence, RI 02905.

NONPROFIT ORG.
U.S. POSTAGE
PAID
PROVIDENCE, RI
PERMIT NO. 538

*Join
Us*

NEWPORT HOSPITAL'S
— SUMMER CELEBRATION —
A SALUTE TO HEALTH

WEDNESDAY, JULY TENTH
TWO THOUSAND NINETEEN
6 - 9 P.M.

EISENHOWER HOUSE, FORT ADAMS
NEWPORT, RHODE ISLAND

**JOIN EVENT CO-CHAIRS HOLLY BANNISTER, MD; DORY HAMILTON BENSON;
NOREY DOTTERER CULLEN; ANNE HAMILTON; KIMBERLY PALMER; ISABELLA DANA RIDALL;
AND SHARON WOOD PRINCE AS WE HONOR **POWERED BY PRINCE** AT OUR
ANNUAL SEASIDE CELEBRATION TO BENEFIT NEWPORT HOSPITAL.**

FOR MORE INFORMATION PLEASE CONTACT ELIZABETH C. ISDALE AT 401-845-1619,
EISDALE@LIFESPAN.ORG OR VISIT GIVING.LIFESPAN.ORG/NEWPORT/SUMMER-CELEBRATION

Newport Hospital, a publication of Newport Hospital Foundation, is published for our friends and supporters.

At times we share news and information with our donors electronically. If you'd like to receive timely updates by email and help us reduce paper and postage costs, please email NHGiving@lifespan.org.

We invite you to learn more by contacting the Development Office at 401-845-1617 newporthospital.org/Giving-to-Newport-Hospital